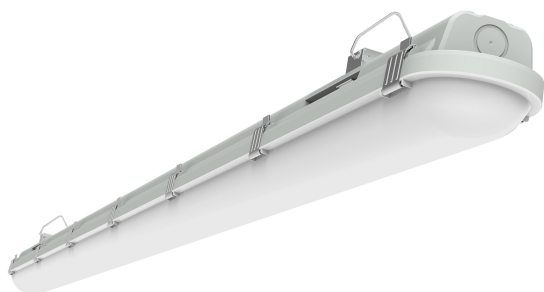


# PRODUCT DATASHEET

## LED PERFORMANCE DP 1500 49W 840 EM

LED PERFORMANCE DAMPPROOF EMERGENCY | Damp-proof luminaires



### Areas of application

- Industrial and storage facilities
- Car parks and underpasses
- Garages
- Workshops, assembly lines
- Warehouses
- Humid and dirty application areas

### Product benefits

- UV-stabilized polycarbonate opal diffuser for uniform light distribution and long durability
- Polycarbonate body and diffuser offers IK08 impact protection
- Sleek and lightweight slim body design, compact but powerful
- Low maintenance costs thanks to long lifetime

### Product features

- Available in six wattages and lumen packages
- Available in 3 length options, ensuring direct replacement of traditional 2-4-5 feet fluorescent dampproof fixtures
- High system lumen efficacy: 130lm/W
- Color rendering index  $R_a$ : > 80
- Available with color temperature: 4,000 K, 6,500 K
- Anti-corrosion stainless steel clips
- Type of protection: IP65
- Impact resistance: IK08
- Certificate: CB, EMC, ROHS2.0



- DALI version and self-contained emergency versions are available within the same family

## TECHNICAL DATA

### Electrical data

Nominal wattage	49.00 W
Nominal voltage	220...240 V
Mains frequency	50...60 Hz
Total harmonic distortion	≤ 20 %
Protection class	I
Operating mode	Integrated LED driver

### Photometrical data

Luminous flux	6000 lm
Luminous efficacy	122 lm/W
Color temperature	4000 K
Light color (designation)	Cool White
Color rendering index Ra	> 80
Standard deviation of color matching	< 5 sdcm
Photobiological safety group acc. to EN62778	RG0
Beam angle	120 °

### Dimensions & Weight

Length	1499.00 mm
Width	77.00 mm
Height	68.00 mm
Product weight	1942.00 g

### Materials & Colors

Product color	Gray
Housing color	Gray
Body material	Polycarbonate (PC)
Cover material	Polycarbonate (PC)
Mercury content	0.0 mg

### Application & Mounting

Type of connection	Terminal, 3-Pole (L, N, PE)
Type of protection	IP65
Protection class IK (shock resistance)	IK08

Dimmable	No
Mounting type	Suspended/Surface
Mounting location	Ceiling / Wall
Application environment	Indoor
Replaceable light source	No


## BATTERY


Battery size [GMS]	18650
--------------------	-------

## Certificates & Standards

Standards	CB / ROHS / EMC
Replaceable light source (EPREL)	Not replaceable

## DOWNLOAD DATA

Documents and certificates	Document name
 User instruction / safety instructions	LDPFM DP 1200_1500 EM G3

Photometric and lighting design files	Document name
 IES file (IES)	LDPFM DP 1500 49W 840 EM G3

## LOGISTICAL DATA

Product code	Packaging unit (Pieces/Unit)	Dimensions (length x width x height)	Gross weight	Volume
4058075587816	Folding box 1	72 mm x 82 mm x 1,505 mm	1960.00 g	8.89 dm <sup>3</sup>
4058075587823	Shipping box 10	1,521 mm x 163 mm x 440 mm	20714.00 g	109.09 dm <sup>3</sup>

The mentioned product code describes the smallest quantity unit which can be ordered. One shipping unit can contain one or more single products. When placing an order, for the quantity please enter single or multiples of a shipping unit.

## DISCLAIMER

Subject to change without notice. Errors and omission excepted. Always make sure to use the most recent release.