

# PRODUCT DATASHEET

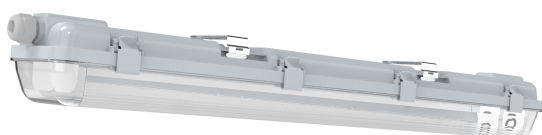
## LED ECO DAMPPROOF HOUSING 600 2XLAMP

LED ECO DAMPPROOF HOUSING GEN2 | Damp-proof luminaires

---

### Areas of application

- Industrial and storage facilities
- Car parks and underpasses
- Garages
- Workshops, assembly lines



---

### Product benefits

- UV stabilized, impact resistant polycarbonate diffuser and body
- PC clips and stainless-steel clips
- Fused design to offer protection when inserting traditional T8 florescent tubes by mistake
- Designed to work with IEC 62776 compliant LED T8 with AC input on one end

---

### Product features

- 2 series to choose from: with and without metal tray in the housing
- Available with: 2 ft, 4 ft and 5 ft
- 70 mm full height housing design in all models
- Available in 1 lamp & 2 lamps versions
- Type of protection: IP65
- Impact resistance: IK08



TECHNICAL DATA

Dimensions & Weight

|                |           |
|----------------|-----------|
| Length         | 651.00 mm |
| Width          | 105.00 mm |
| Height         | 70.00 mm  |
| Product weight | 636.00 g  |

LDECO DP 600 2XLAMP HOUSING  
G2 LEDV

Materials & Colors

|                 |                    |
|-----------------|--------------------|
| Product color   | Gray               |
| Housing color   | Gray               |
| Body material   | Polycarbonate (PC) |
| Mercury content | 0.0 mg             |

Application & Mounting

|  |                         |
|--|-------------------------|
| Type of connection                     | Terminal, 2-Pole (L, N) |
| Type of protection                     | IP65                    |
| Protection class IK (shock resistance) | IK08                    |
| Dimmable                               | No                      |
| Mounting type                          | Suspended/Surface       |
| Mounting location                      | Ceiling / Wall          |
| Replaceable light source               | No                      |

LOGISTICAL DATA

| Product code  | Packaging unit (Pieces/Unit) | Dimensions (length x width x height) | Gross weight | Volume    |
|---------------|------------------------------|--------------------------------------|--------------|-----------|
| 4058075544284 | Folding box<br>1             | 110 mm x 79 mm x 655 mm              | 699.00 g     | 5.69 dm³  |
| 4058075544291 | Shipping box<br>6            | 672 mm x 236 mm x 265 mm             | 4811.00 g    | 42.03 dm³ |

The mentioned product code describes the smallest quantity unit which can be ordered. One shipping unit can contain one or more single products. When placing an order, for the quantity please enter single or multiples of a shipping unit.

---

## DISCLAIMER

Subject to change without notice. Errors and omission excepted. Always make sure to use the most recent release.